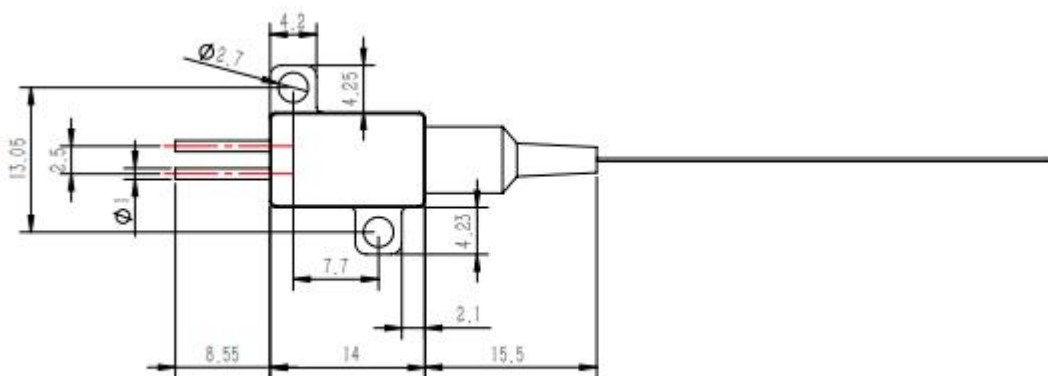
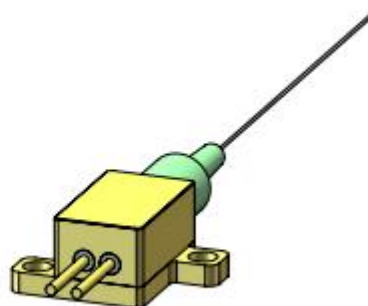
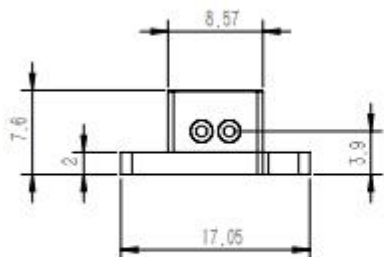


# 793nm/9W Multi-Mode Pigtailed Laser

## Dimensions



### Features:

- High output power
- Excellent beam quality
- High reliability

### Applications:

- Laser display
- Laser engraving
- Laser illumination

# 793nm/9W Multi-Mode Pigtailed Laser

## Specifications

Parameters	Min.	Typical	Max.	Test Conditions
<b>Optical Properties</b>				
Center Wavelength	786nm	793nm	796nm	At Po = 9W & Tcase = 25°C
Output Power ( <b>Pop</b> )		9W	9.5W	At Tcase = 25°C, Iop = 12A
Operating Temperature ( <b>Tcase</b> )	-10°C	25°C	45°C	建议使用散热条件的良好的底座
<b>Electrical Properties</b>				
Threshold Current ( <b>Ith</b> )		0.8A		
Operating Current ( <b>Iop</b> )		10A	12A	At Po = 9W & Tcase = 25°C
Operating Voltage ( <b>Vop</b> )		1.8 V	2.4V	At Po = 9W & Tcase = 25°C
Reverse Breakdown Voltage ( <b>VR</b> )		0.8V		
<b>Fiber Type</b>				
Numerical Aperture (NA)		0.22		
Fiber Model	200/220			Customizable
Fiber Length	>1.0 m			Customizable
Ferrule Specifications	0.9 black loose tube			Customizable
Output Connector	Bare fiber or FC/APC			Customizable
<b>Storage Conditions</b>				
Storage Humidity	5% ~ 85% RH			No condensation
Storage Temperature	-20 ~ 60°C			No condensation